

# Photobot™

**Automates  
Adobe Photoshop™  
for Batch Photo  
Conversion!**

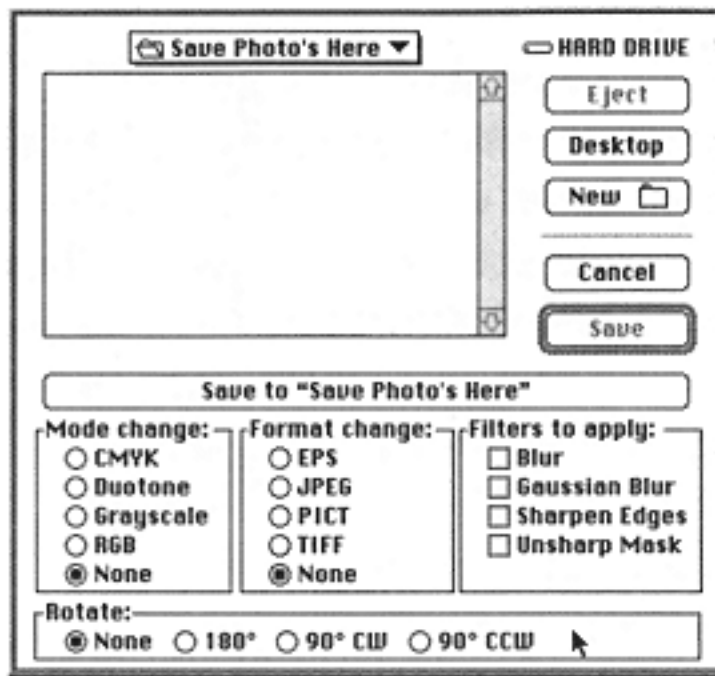


**OUTPUT LEVELS:**



Introduction.....	2
Installation.....	3
Installation Window.....	4
Registration Number.....	4
Operations.....	5
Source Folder.....	5
Destination Folder.....	5
Save Function.....	6
Parsing Adobe Illustrator Files.....	6
Windows Installation.....	7-9
Kodak Photo CD's.....	10-14
Hints and Troubleshooting.....	15

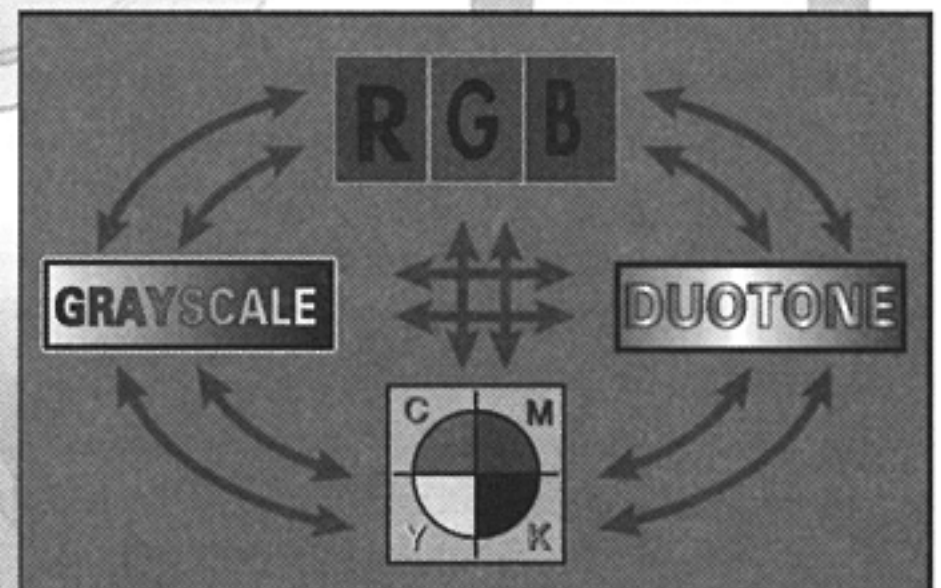




**Photobot™** is one of the most cost-effective and easy-to-use softwares on the market today. No matter in which part of the graphics industry you reside, if you use Adobe Photoshop™ then Photobot™ will help you to maximize your computer's capabilities.

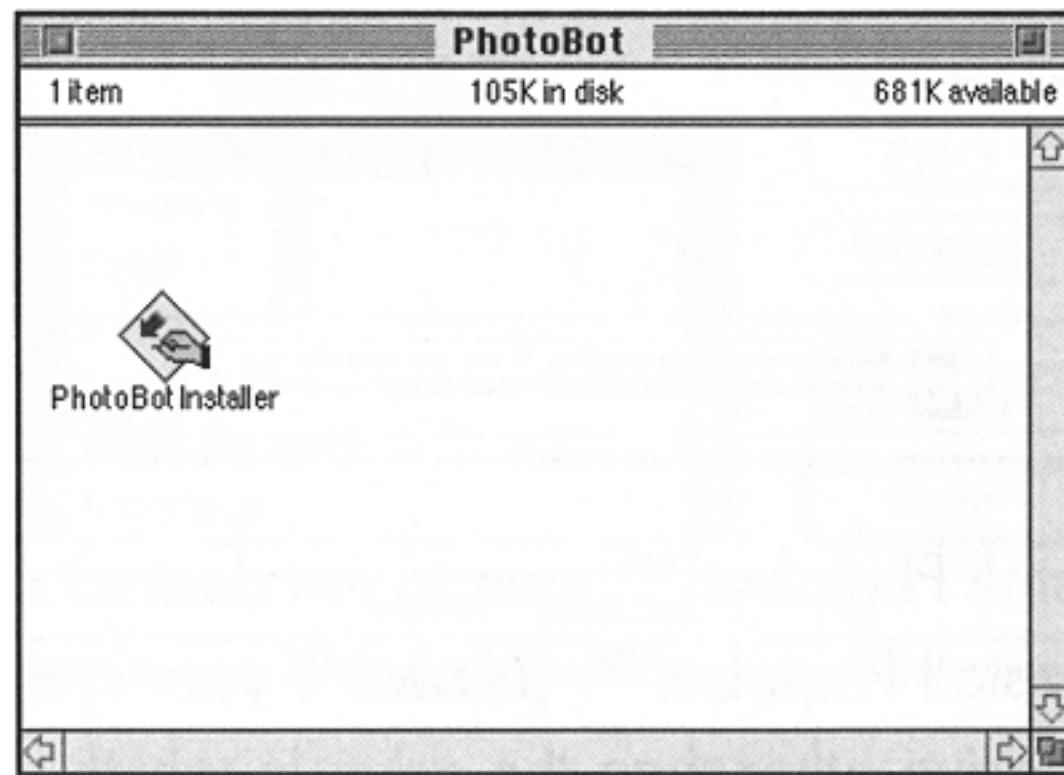
With no new software to learn, Photobot's™ easy point-and-click operation can take the power of Adobe Photoshop™ to a new level. Let the computer do the work, automatically converting any recognized Adobe Photoshop™ file to and from CMYK, Grayscale, Duotone and RGB. Photobot™ also gives you the ability to pick the format, apply filters and rotate your images while running unattended.

Photobot's™ automation starts the very instant you open the program by launching Adobe Photoshop™ for you. Imagine the ability to convert an entire folder full of Kodak Photo CD™ images to CMYK while you are in a meeting, at lunch, or focusing your attention elsewhere. Photobot™ eliminates those repetitive mouse clicks for you. We believe that this type of productivity gain makes Photobot™ the automatic choice for the professional results you need.

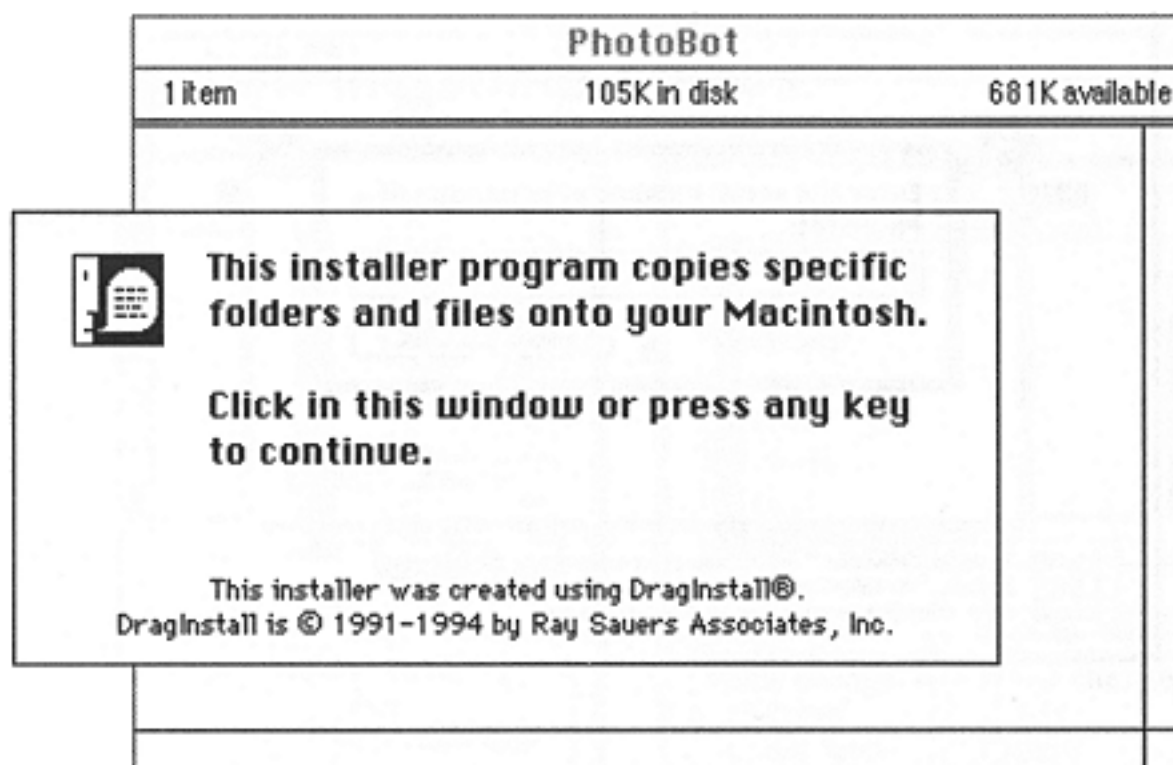


## To start the Installer:

- 1) Insert the Photobot™ CD into your CD-ROM drive.
- 2) Double click the CD icon.
- 3) Open the Photobot™ folder.



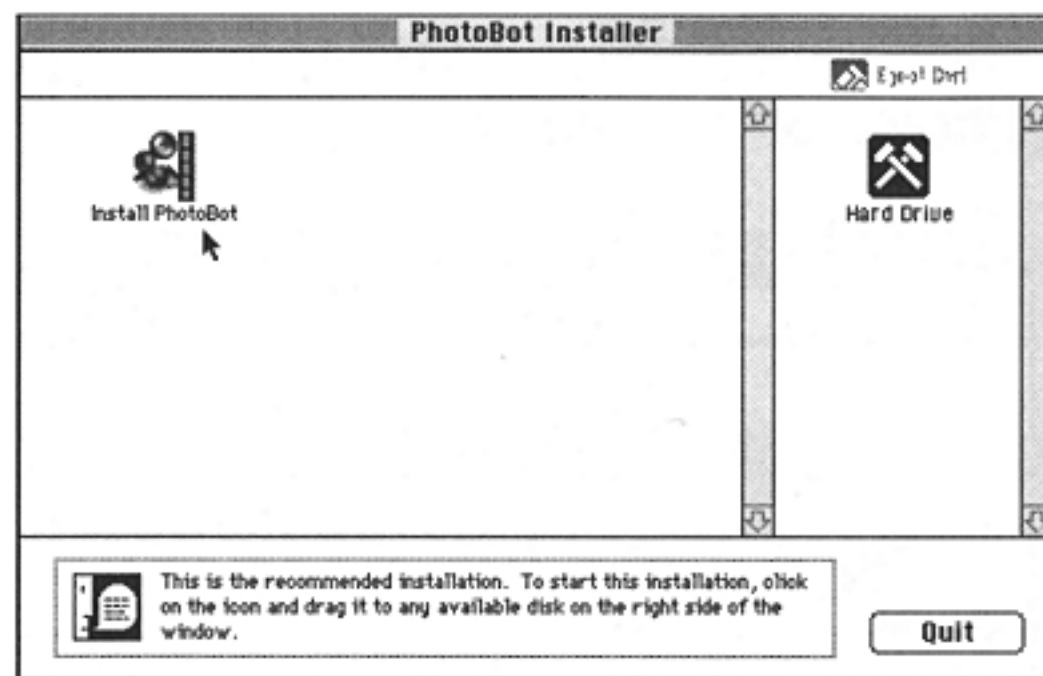
- 4) Double click on the Photobot™ Installer icon. The introduction window appears.



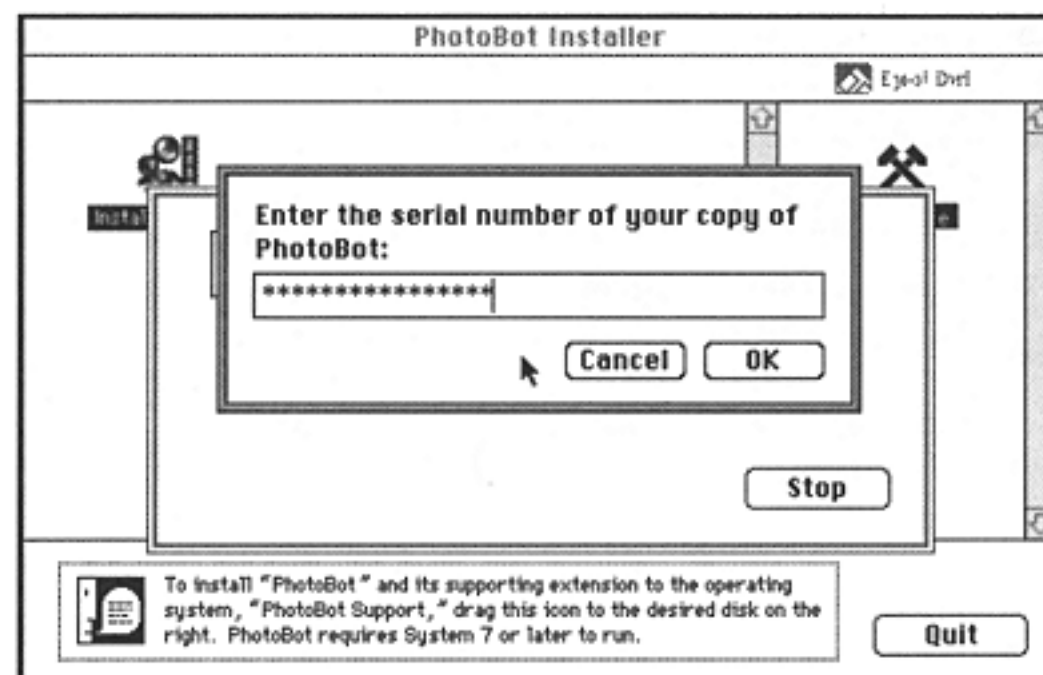
- 5) Click on the window or press any key to continue.

## To install the Photobot™ program:

- 1) The Photobot™ installer window appears. You will be requested to select a hard drive on which to install the Photobot™ folder.



- 2) Drag the "Install Photobot™" icon to the desired disk on which you wish to install Photobot™. (**Note:** *If your system folder is located on a drive other than the drive in which you are installing Photobot™ select "Show Other Installations" in the upper left corner of the installation pallet. Select and drag the Photobot™ Support icon into the hard drive containing your system folder.*)

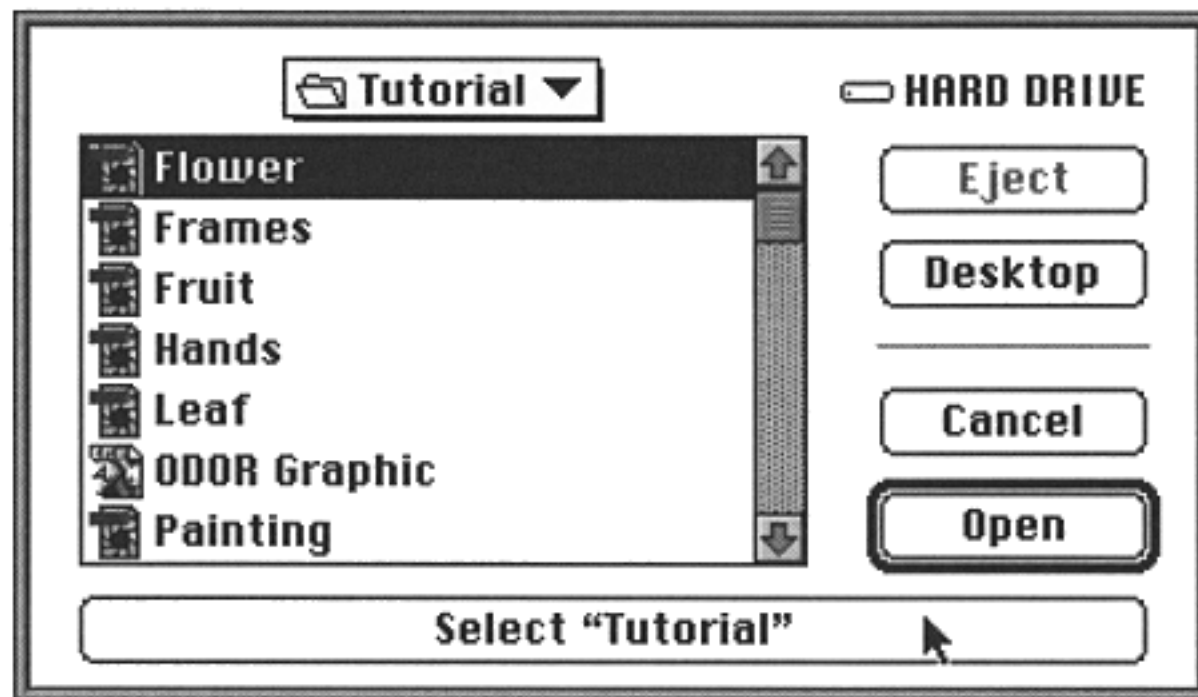


- 3) The serial number registration window now appears. Enter your fifteen (15) digit serial number.
- 4) Click OK.
- 5) The installation complete window appears.
- 6) Click **Restart** to use your new Photobot™ software.



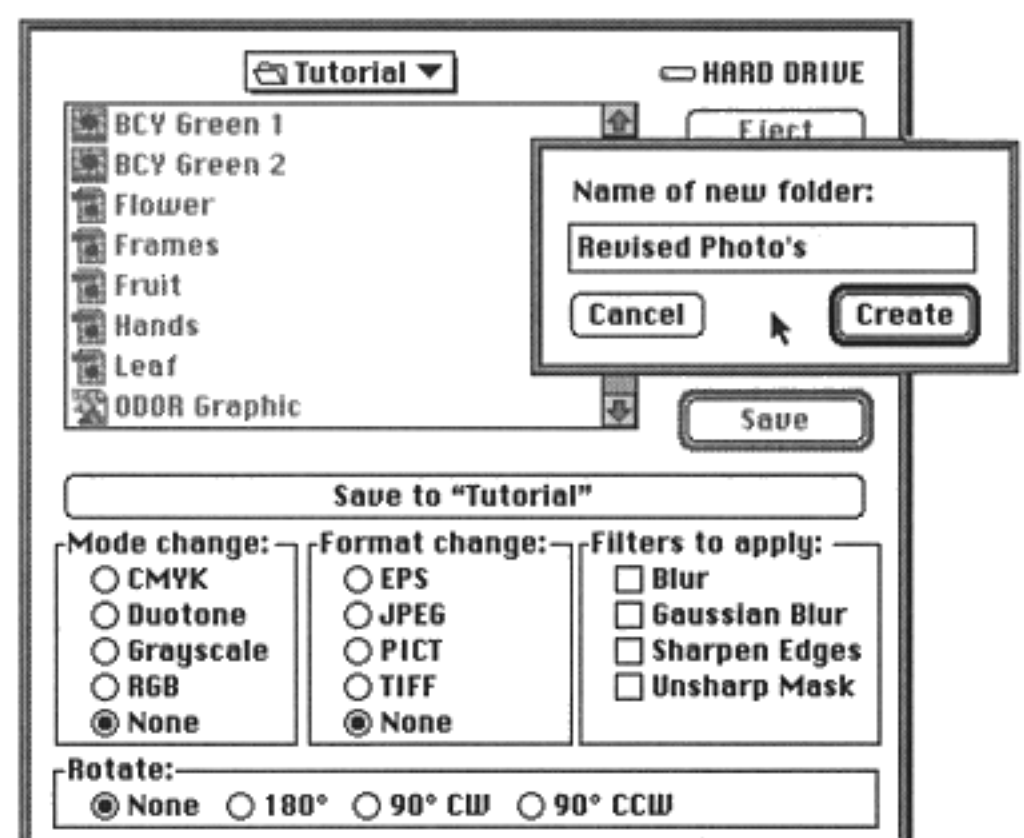
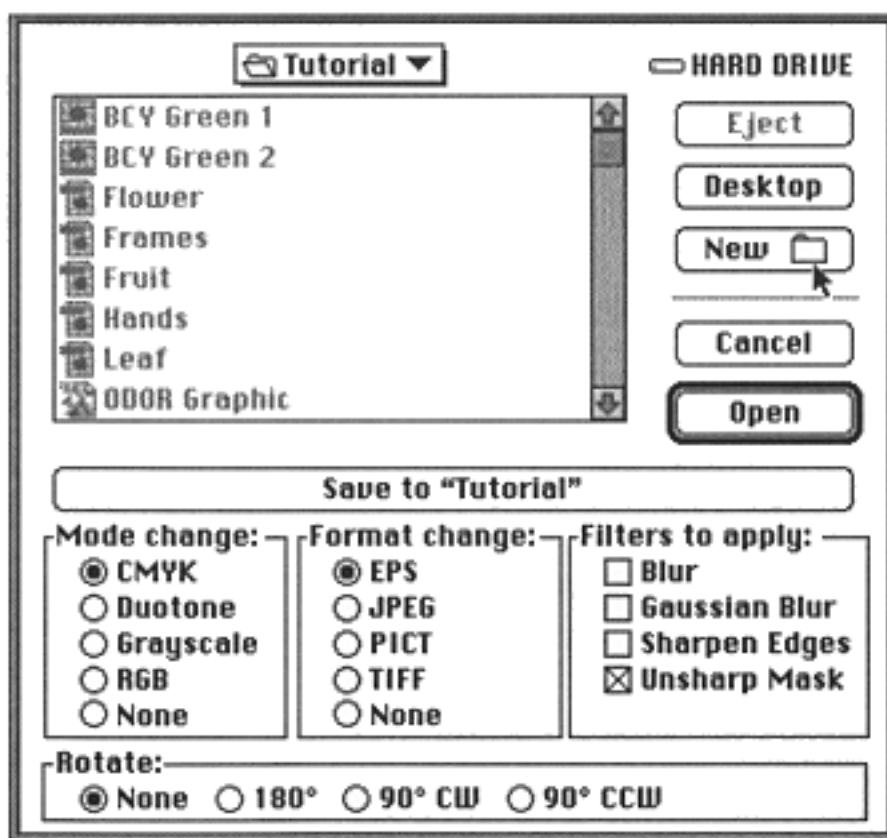
## Operation

Open the Photobot™ folder on your hard drive and double click the Photobot™ icon to launch the program. The first window is the source folder dialog box. Locate the folder of images to process, open the folder and click select.



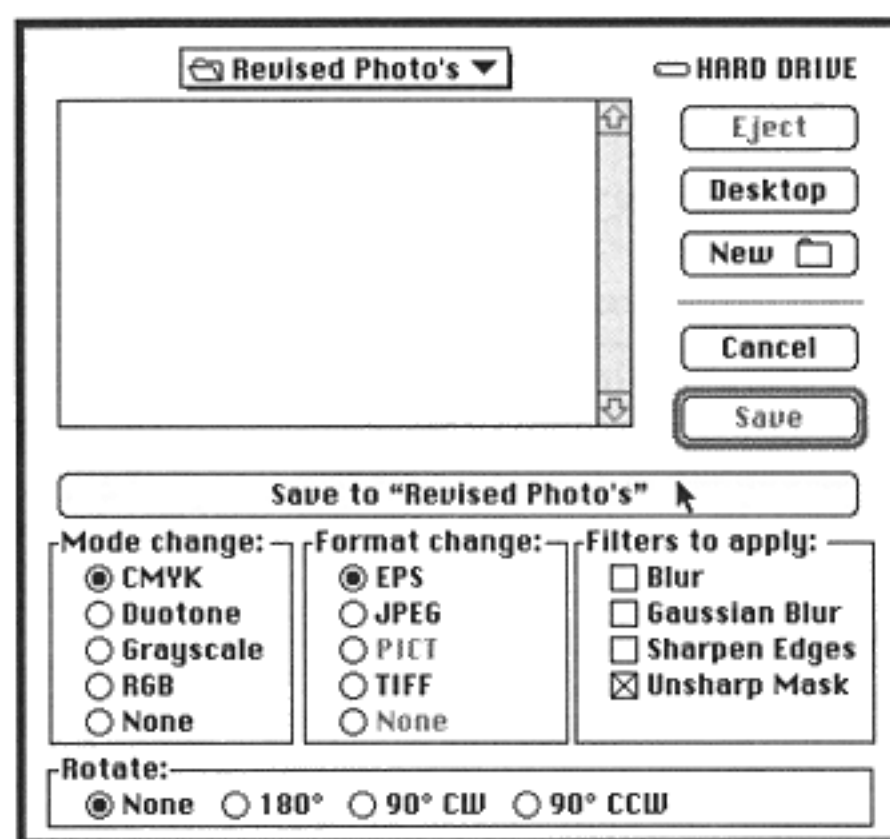
The destination folder dialog box will now appear. Select the destination folder... Now choose the conversion options by simply clicking the button beside the option.

Now **choose a destination folder**. Photobot™ will not replace the original files. You must save the files into a folder that doesn't have files with the same names.



**(TIP:** Use the "create a new folder" button to make a new folder inside the source folder. Name it "Revised Photos". By doing this, the Revised Photos may be moved to the source folder to replace the original files after conversion by Photobot™).

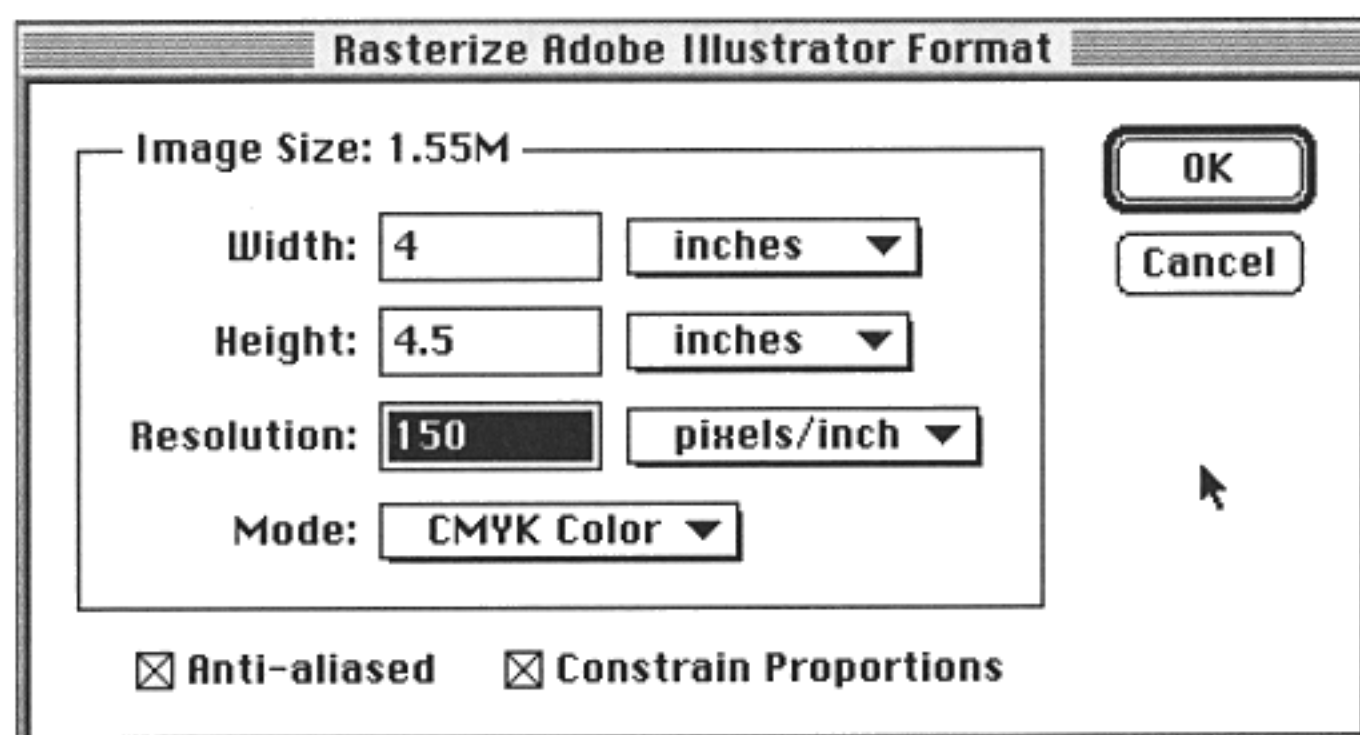
After choosing a destination folder, click the select button again. Photobot™ will now look for Adobe Photoshop™ on the hard drive the folder is in and launches Photoshop™.



**Note:** Some of the format selections are now grayed out. Photoshop™ will only save certain modes in certain formats. After completing all the files in the source folder, Photobot™ will "beep", then disengage with Photoshop™ still active. If your Photoshop™ program is located somewhere other than on the same drive as Photobot™, you will have to open Photoshop™ first, then launch Photobot™.

## Parsing Adobe Illustrator Files

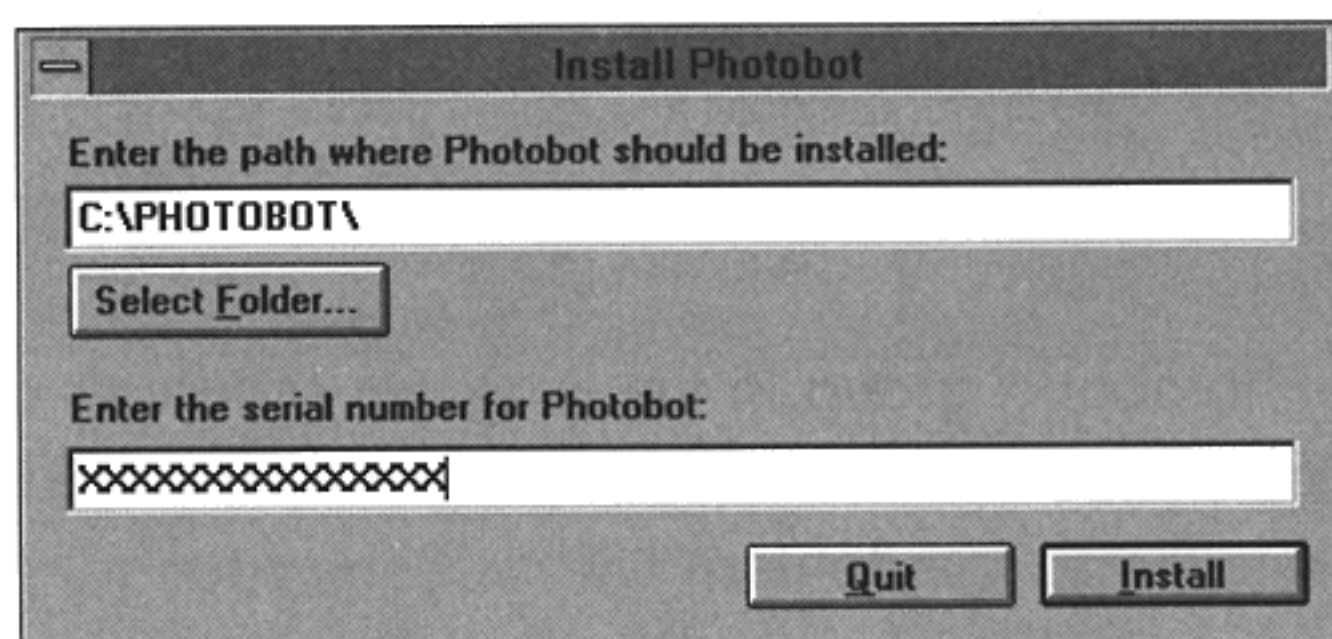
Illustrator™ EPS files can be imported into Photoshop™ automatically using Adobe's parsing engine provided with Photoshop™. Simply open one Illustrator™ file through Photoshop™ to set up the preferences file before running a folder of illustrations.





## INSTALLATION

To install this program, insert the disk into your CD drive and select the menu item Run under the File menu in the Program Manager or the File Manager applications. In the command line, enter the command (CD drive):\INSTALL, where (CD drive): is the letter for your CD drive, and select the button OK.



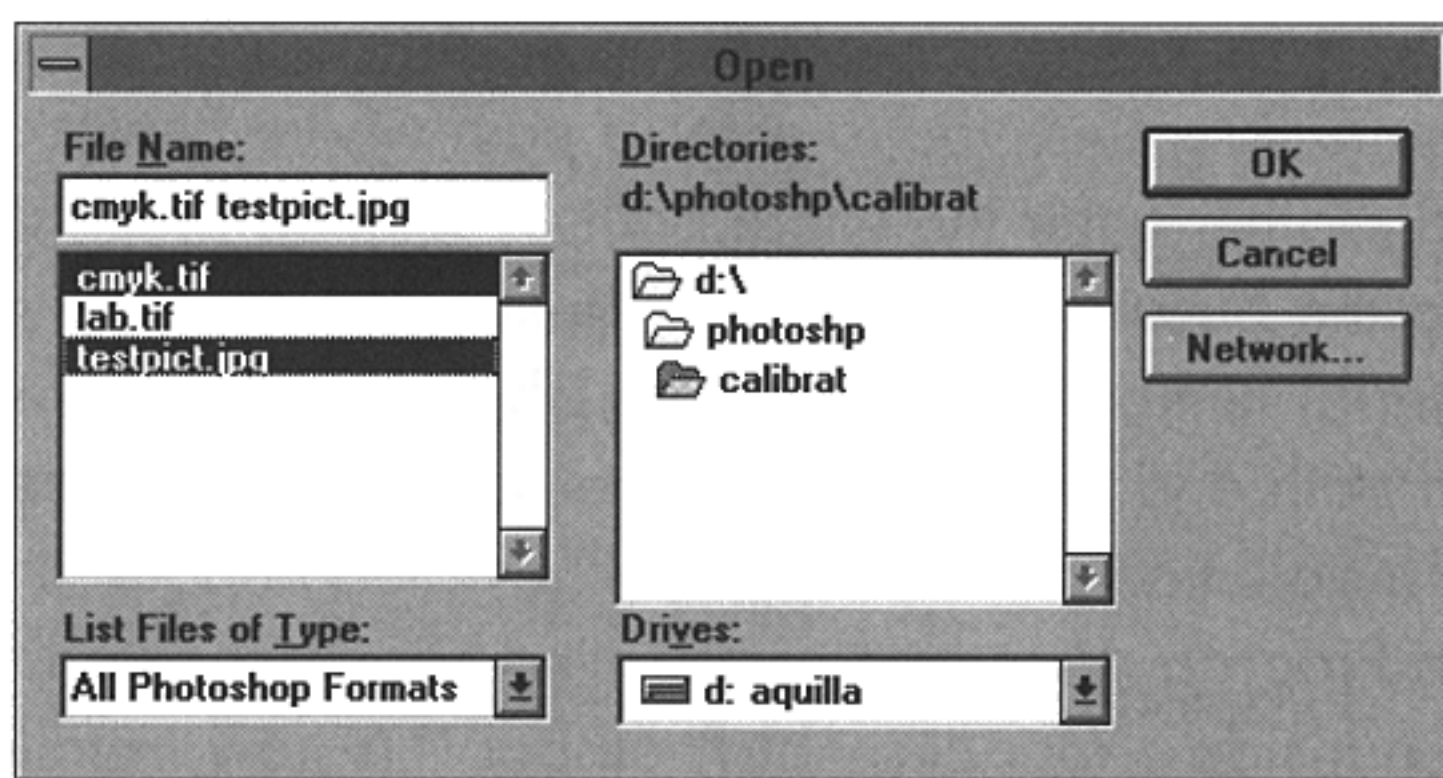
The Installer will request you to enter a path where Photobot™ will be installed. Either enter the entire path or select a preexisting path by selecting the button Select Folder. Next you must enter the fifteen digit serial number provided in your software literature. Once you have a path and serial number entered, select the button Install to start the installation process. This will create the path, if necessary, and a Program Manager group titled Photobot with the application's icon inside. Your copy of Photobot™ is now installed and ready to work.



**NOTE:** The application INSTALL requires a special Windows library to use 3-D buttons to be installed beforehand, and running it will demonstrate whether or not the library is already installed. If one or two alerts show up mentioning problems with the file CTL3D.DLL, you will need to run the pre-installer application by using the command (CD drive):\INSTLL3D before performing the install with the command (CD drive):\INSTALL. This library is already installed by a number of other Windows products and comes standard in various configurations of Windows, so you may not need to run INSTLL3D.

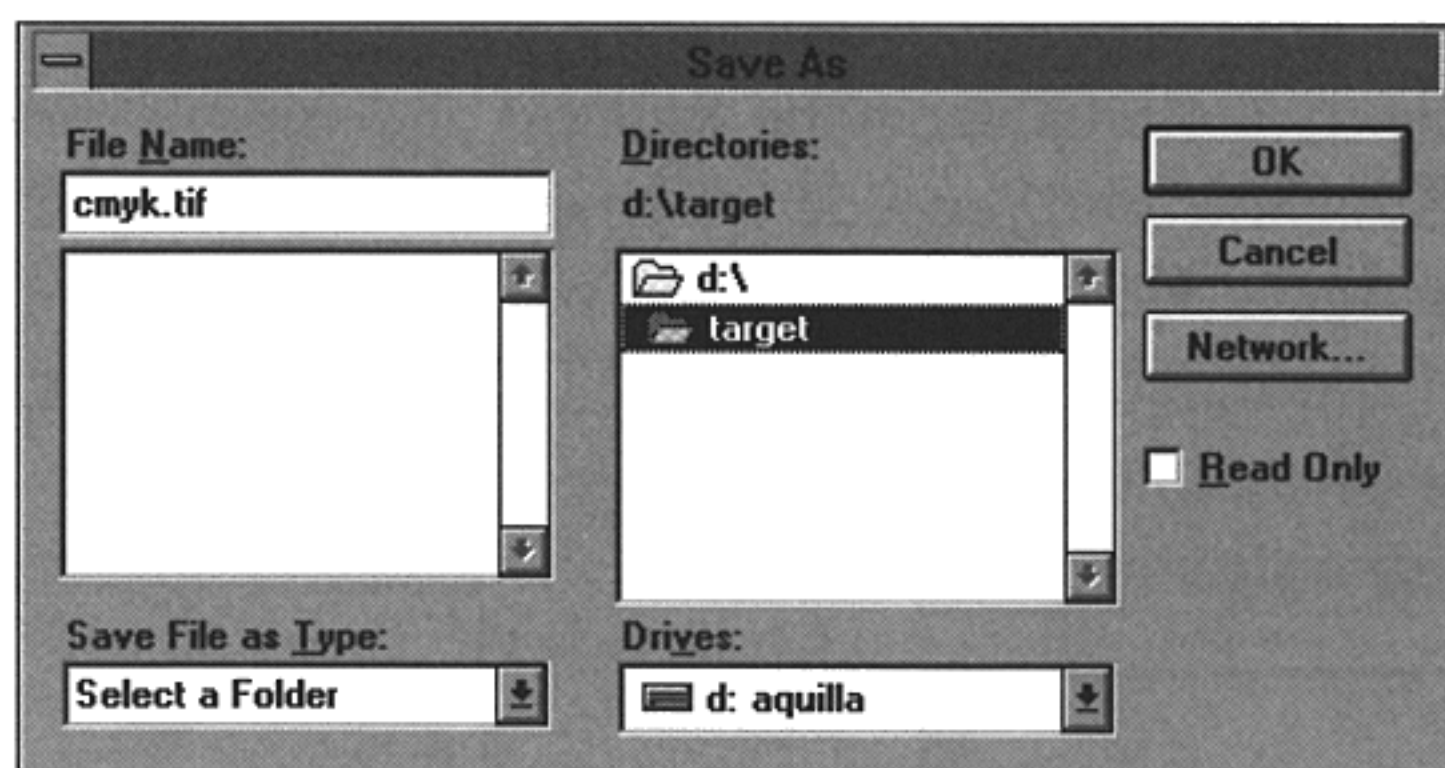
## OPERATION

Open the Photobot™ group in the Program Manager and double click the Photobot™ icon to launch the program. The first information requested is the source folder.

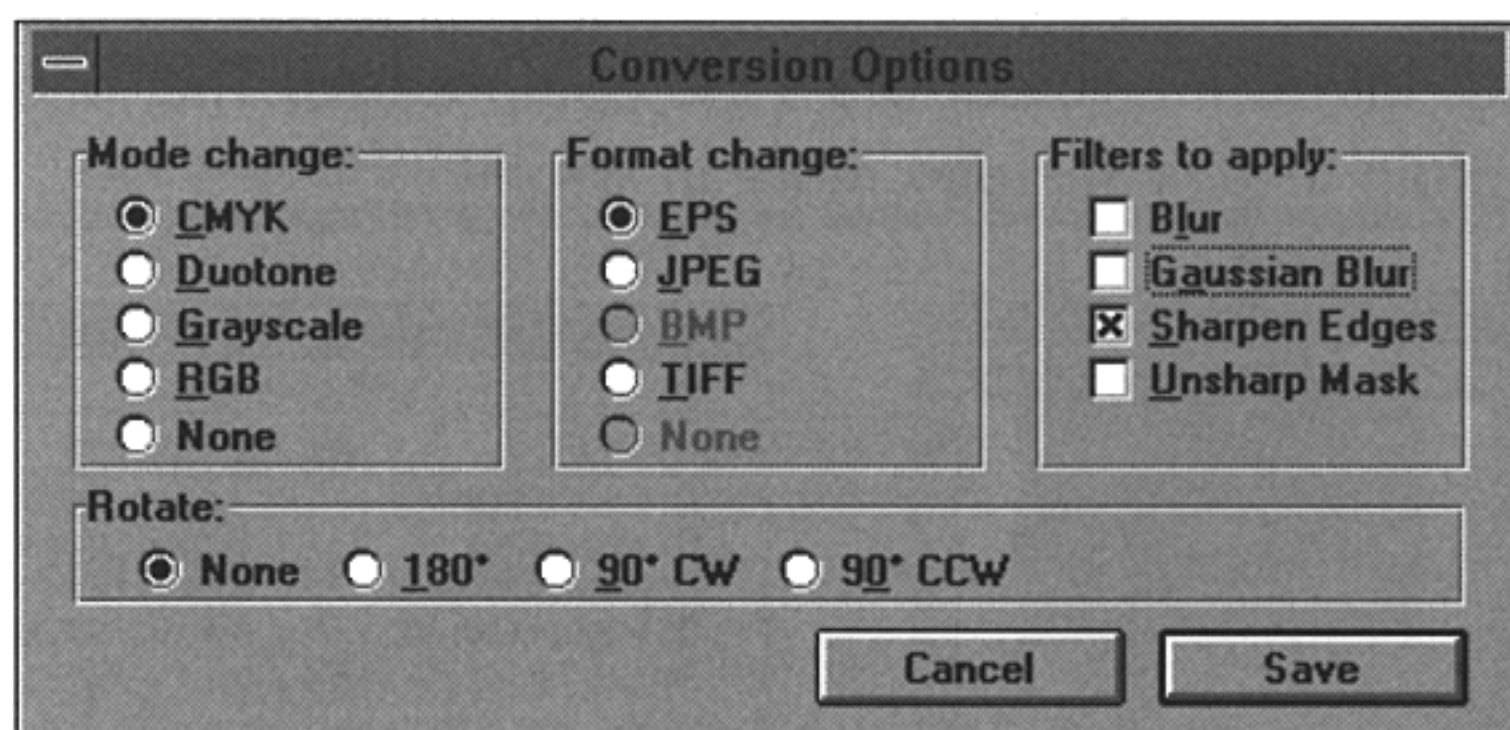


Locate the folder of images to process and select the desired files using the shift and control keys to select multiple files. The next choice is to select where the converted files should go. This selection can be made from the window titled "Save As." Photobot™ will not replace the original files in the source folder, so you must save the files into a folder that doesn't have files with the same names as those previously selected.

If you need to create a new folder, you can switch over to the File Manager and create a new directory with the menu item Create Directory under the menu File.



After choosing a destination folder, select the button OK. The Conversion Options window will now appear, from which you may choose the options for Photobot™ to perform by selecting the buttons beside the options. Once you've made your choices, select the button Save and Photobot™ will look for Adobe Photoshop™ and launch it if it isn't currently running.



After completing all the files in the source folder, Photobot™ will "beep" and quit, leaving Photoshop™ active.

## **Note: Windows 95 users.**

Photoshop™ has a problem when operating in Windows 95. Users should upgrade to at least v. 3.04 of Photoshop for Windows to run Photoshop under Windows 95.



## Kodak Photo CD's

There are two ways to use Kodak's Photo CD's, the wrong way and the right way. We will explain the correct way.

Open a Photo CD from the desktop and you will see three items, a slide show doc., a slide show viewer app., and a Photos folder (See figure 1). However, if you pull out the CD window you will see another folder called "PHOTO\_CD"; open this folder to see its contents (See figure 2).

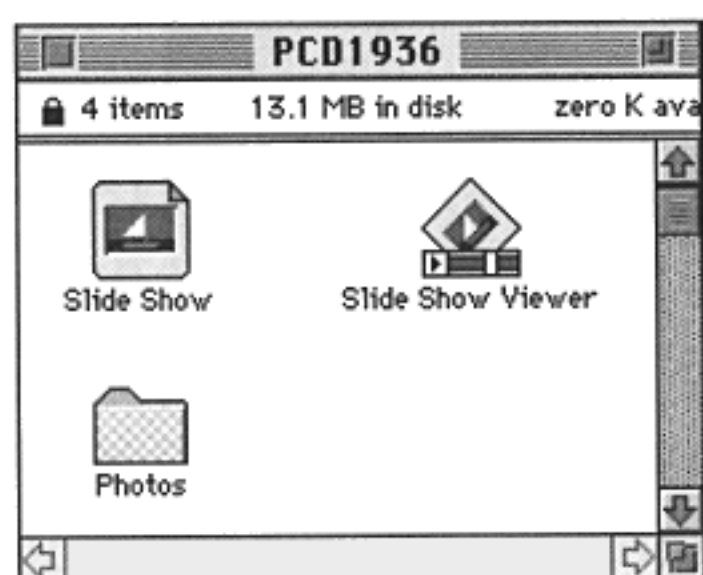


figure 1



figure 2

Inside the "PHOTO\_CD" folder (See figure 3), you will find an "IMAGES" folder. Double click to open this folder (See figure 4). The images inside this folder are YCC compressed. The following pages explain this technology more in depth.

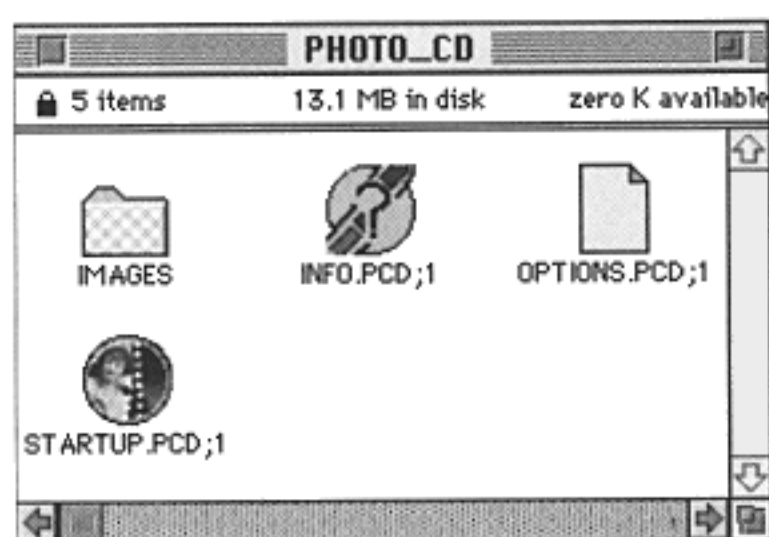


figure 3

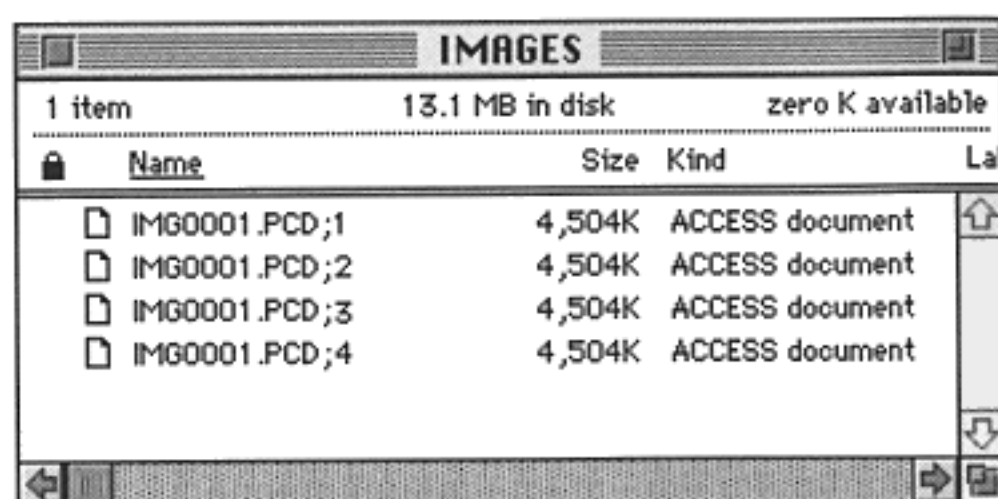


figure 4

Consistent color for printing or video is the goal of all desktop publishers. Kodak achieves this by the use of "Transforms or Profiles" using Photoshop's™ color engine. Photobot™ takes advantage of this technology through the Photoshop™ preferences file.

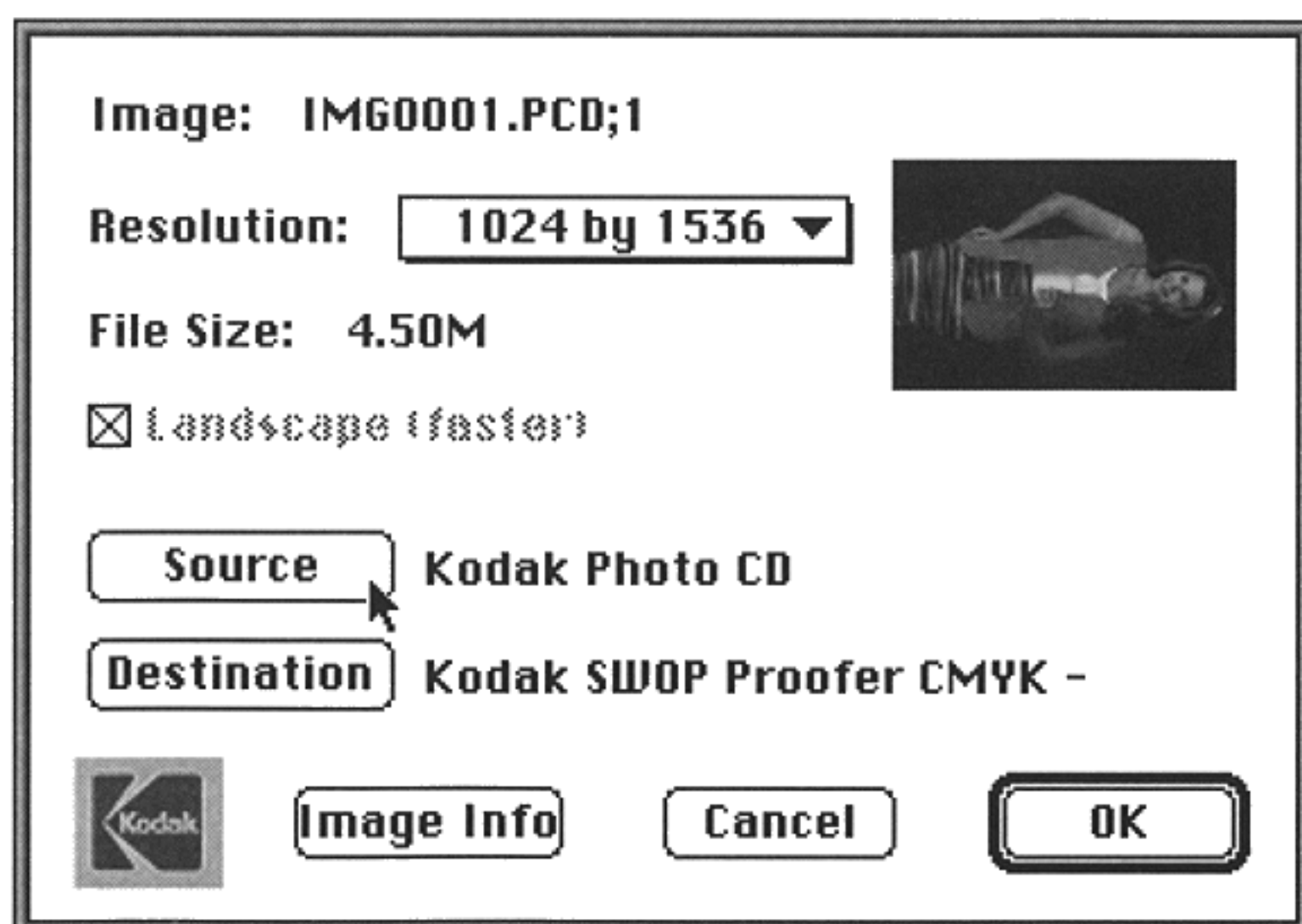


In order to see the difference between correct usage and other usage, refer to the back of the manual's cover. Figure A is a photo that was opened in Photoshop™ from the "Photos" folder in the first level of a Photo CD. It was then converted to CMYK for film output and printing. Figure B is the same photo opened from the 'PHOTO\_CD' folder through Photoshop™ using Kodak's RGB transform, then converted to CMYK for film output. Figure C was opened from the 'PHOTO\_CD' folder through Photoshop™ using Kodak's CMYK transform. Note the differences in all these photos.

### Opening Photo CD Images on the PC and Macintosh

Adobe has worked with Kodak to provide a powerful path for making use of Photo CD images in Adobe Photoshop. The Kodak CMS Photo CD file format plug-in incorporates the Kodak Precision Color Management System, which provides you with a high quality color transformation engine and flexible choices for different interpretations of Photo CD's Photo YCC color space through the use of Precision Transforms (a.k.a. Profiles).

The Kodak CMS PCD plug-in currently ships with Adobe Photoshop 3.0 and 2.5.1 for the Macintosh and will be included in Photoshop 3.0 for Windows platforms. The Kodak CMS plug-in is accessed from the Open or Open As menus in Photoshop (not the Acquire menu). If you select a Photo CD format file in the Open dialog, the Kodak CMS plug-in is automatically selected for you by the application.



The default set of Precision Transforms shipped with Photoshop include SOURCE Photo CD profiles for three different source image types. These profiles are designed to correspond to different set-ups used when scanning images on the PIW. Miller Imaging uses the Universal film terms designed to provide consistent color when using the Kodak CMS plug-in. Also included are DESTINATION profiles for both Photoshop RGB and LAB color spaces. The Kodak Precision CMS allows you to select the SOURCE and DESTINATION independently. The SOURCE profile represents the relationship between the SOURCE, in this case YCC, and a reference color space (RCS).

The DESTINATION profile represents the relationship between the RCS and the destination color space (RGB or LAB). The two halves are combined to create a single transformation table through which the image data is processed using a sophisticated tri-linear interpolation method.

Version 2.1.0 update to the Kodak CMS plug-in for Macintosh was released in the spring of 1994 which provides improved SOURCE profiles, is 30% faster and supports Base~64 resolution found on Pro Photo CD discs. If you purchased your copy of Photoshop 2.5.1 prior to May, it has the old version. The update can be downloaded from America On-Line (Mac Graphics Forum Library, keyword: MGR) or CompuServe (GO ADOBE, Library) or by calling Adobe Tech Support at 408-986-6500 (ask for the Kodak CMS plug-in update).

For making color separations from Photo CD, you can either use Photoshop's internal mode change to CMYK or Kodak sells a Starter Pack for \$99 which provides optional DESTINATION profiles for use with the Kodak CMS plug-in allowing you to convert directly from YCC to CMYK. The Starter Pack provides high quality results and predictable color from Photo CD scan to output. For more information on the Kodak Precision Color Management System and compatible products, see section 4 below.

### **Kodak Precision Color Management System (CMS)**

The Kodak Precision I Color Management System is part of the KCMS family of color management products and technologies from the Kodak Color Management Systems Group.

When your objective is to have your printed reproductions match the original scene or the original transparency as closely as possible, the Kodak Precision CMS preserves the color information in the conversion from Photo YCC to RGB or CMYK.

Kodak Precision is a high quality CMS based on field-proven technology originally developed for the Kodak Designmaster 8000 and Prophecy prepress systems. Now migrated to the desktop, the Kodak Precision CMS is integrated with a growing number of applications including Adobe Photoshop, Aldus PhotoStyler 2.0, DayStar ColorMatch, Kodak Access Plus, Micrografx Picture Publisher and the KEPS PCS100 Kit. Kodak offers a variety of enhancement products which allow you to customize the Kodak Precision CMS for your needs. These products include:

### **Kodak Precision Starter Pack for Adobe Photoshop**

This product bundles several optional DESTINATION profiles for use with the Kodak CMS Photo CD plug-in included with Adobe Photoshop. Included are three different separations profiles, U.S. SWOP negative, Euroscale positive and Japanese

standard proofing for converting directly from YCC to CMYK. Also included are 6 additional flavors of RGB (in addition to the default Adobe Photoshop RGB) and profiles which convert from YCC directly to the colorants of the Kodak XL7700/7720 and Kodak ColorEdge color copier.

Catalog Number: 106206 (Mac)

Price: US \$99

### **Professional Proofing Device Color Profiles (DCP)**

These are optional profiles for generating CMYK separations for the colorants of a specific proofing system. If you are a publisher or service bureau that always uses a specific type of off-press proofing system such as 3M Matchprint or Kodak Contract, you will benefit from using a Professional Proofing Profiles compared to a generic CMYK. Each package includes 15 individual profiles for 260, 280, 300, 320 or 340 UCR setting and light, medium and heavy GCR.

#### **DCPs for the following proofing systems are available:**

3M Matchprint II  
Agfa Proof  
Kodak Approval  
Kodak Contract  
Japanese Standard (DIC Press) Kodak Signature  
DuPont Cromalin  
Enco Pressmatch  
Fuji Color-Art  
European Matchprint  
European Cromalin

Price: US \$995

### **Precision Input Color Characterization (PICC)**

If you are looking for the highest level of color matching of original transparencies from Photo CD images, PICC is for you. By allowing you to create custom SOURCE profiles for your Photo CD discs, PICC compensates for any variations in the scanning process. In addition to creating custom profiles for Photo CD, PICC also works with any drum, flatbed or slide scanner.

Included in the PICC package are two Q-60 test targets conforming to the IT8 standard, a 35mm Ektachrome and a 5x7 reflective. To create a custom profile for Photo CD, the 35mm target is sent to a Photo CD service bureau along with your originals. It is scanned to the Photo CD disc using the same Universal E-6 film term which will be used to scan your original chromes. When you receive the disc, you start the PICC software application, select a reference data file for the type of target you scanned (these files are matched to a specific lot # of targets) and select the scanned target from the Photo CD disc. PICC does an analysis of the scanned target compared to the reference data file and creates a custom profile which gets placed into the KPCMS database and can then be selected from any Kodak Precision compatible application or plug-in.

Catalog Number: Windows #106418

Price: US \$295

Macintosh: due summer 1994

### **DayStar ColorMatch**



DayStar is a licensee of Kodak Digital Imaging Technology and has implemented the Kodak Precision CMS in a family of products for use with Adobe Photoshop. The ColorMatch package builds on the capabilities delivered with the Kodak CMS plug-in by adding a color managed on-screen display of Photo CD images as well as WYSIWYP (what you see is what you print) output preview functions.

In addition to color correcting input from any source, color managed preview and export to separations in Adobe PhotoShop using Kodak Precision, the ColorMatch package includes:

- ColorSet monitor calibration
- A Base-set of Kodak Precision DCPs (including CMYK)
- ColorMatch Quark Xtension for accessing color management from within Quark XPress 3.2

For higher performance and greater monitor accuracy, DayStar has the Colorimeter 24 and monitor characterization software as well as the DayStar Charger Board and Charger Suites Volume 3 for acceleration.

ColorMatch Price: US \$239

### **KEPS PCS100 Kit**

The KEPS PCS100 is a high performance upgrade kit for production applications where speed and quality are critical. Based on the Kodak Precision CMS, the PCS100 provides the highest level of visual color matching currently available for use with Adobe Photoshop on the Macintosh.

The kit includes KEPS-developed plug-ins for Adobe Photoshop for correcting input from any source, interactive output simulation for color-managed visual editing, export to separations or interchange to the KEPS Prophecy or Prophecy Server XL. Also included are a professional quality colorimeter and monitor characterization utility and the CTE Acceleration NuBus card with custom ASIC for a 10x boost in transformation speed. To complete the Kit, Adobe Photoshop, P ICC and a Professional Proofing DCP mentioned above is bundled.

KEPS provides a PCS100 tutorial as well as a variety of training, service and support programs. The product is sold direct and through Dealers.

### **Micrografx Picture Publisher 5.0**

Micrografx has begun bundling a Kodak Precision CMS kit with the 5.0 release of Picture Publisher, the popular Windows imaging application. The Kodak Precision CMS is included on the CD-ROM version of the package and has an optional installer allowing the user to enable access to the CMS functions. The CD-ROM version of Picture Publisher has a suggested retail price of \$395. Micrografx is offering a special introductory price of \$149.95 through December 31, 1994.

**For Information Call  
1-800-CDKODAK**



### **Known conflicts:**

After Dark™

Kaboom™

These programs conflict with Photobots™ operation. Their extensions must be disabled or removed from the system folder and the computer restarted before Photobot™ will operate correctly.

### **Hints:**

If there are multiple images on different hard drives or in different folders on the same drive that you wish to convert, create aliases of only the files for conversion and move them to the newly created folder. In Photo CD's™ especially, this is a valuable tool by not having to convert the entire folder, but only the desired images.

Photobot™ has been vigorously beta tested, utilizing as many different computer configurations as possible. If you are having trouble and need help please call the tech support line at (817-838-7131).

## Photos Folder



Figure A

## Images (RGB)

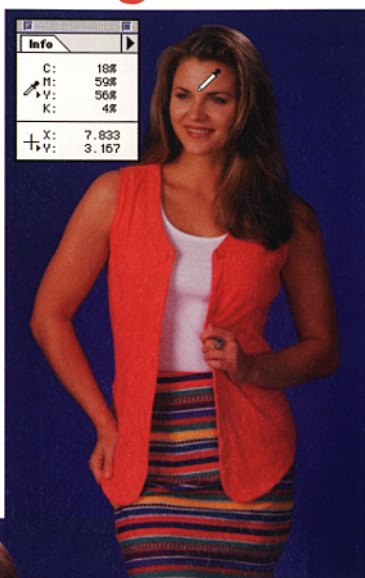


Figure B



## Images (CMYK)

Figure C

